

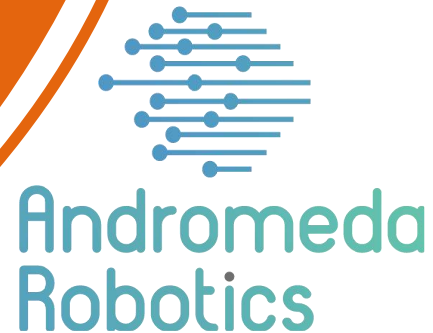


Bee•intelligence

How artificial intelligence can improve decision-making processes and generate a savings of 10%



Shalev Yeter



What will we talk about?

- Who are we
- Agriculture then and now
- Bee Intelligence system
- Advantages of the system
- The software and application



Who are we?

Bee Intelligence is a subsidiary of Zeus AI, a company that specializes in the development and implementation of advanced technologies to improve and streamline operations across diverse businesses in various industries.





ZEVS AI

0
1
Smart
Farming

0
2
Security

0
3
Industry
4.0

0
4
Medicine

0
5
Green
energy

Solutions for the beekeeping industry.

Traditional agriculture

For decades, the beekeeping industry has remained traditional, without significant change.

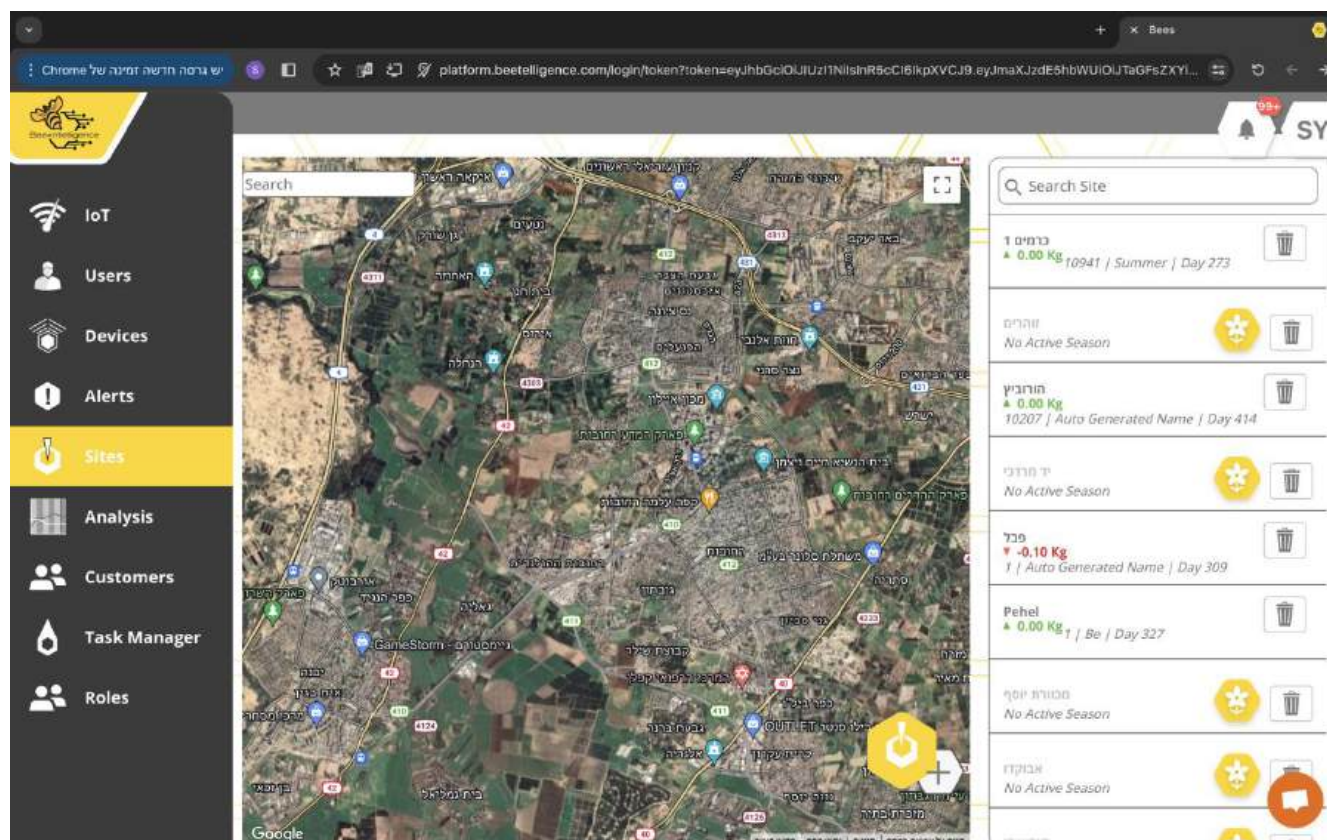
In the modern world, where time is precious, many sectors are advancing, becoming more efficient, and turning many processes into autonomous and 'smart' ones.

Smart Farming

For the first time, we have developed a revolutionary platform, the first of its kind for the honey industry, that significantly upgrades beekeepers' ability to monitor, control, and forecast everything that happens at remote sites without having to travel to them.

This system and its functionalities can lead to a significant improvement in increasing production quantity and preventing honey loss, through a dedicated application and advanced sensors.

Smart Farming



Beekeepers can gain better control over all their grazing sites, increase the productivity of the hives, and enjoy greater profits. The BEE INTELLIGENCE system is composed of several elements that together create a proven and winning tool for the management and control of beehives.

What does the system consist of

weighing unit

Under each hive, a weighing device is installed, which transmits data on the hive's weight several times a day.

This sensor provides the beekeeper with accurate data on the average weight increase of the hive at each site every day.



Climate sensors

Adjacent to the hives, an advanced climate sensor is installed that can measure critical parameters in the local climate.

Using dedicated software, it is possible to analyze and obtain an accurate indication of the condition of the hive in real time.

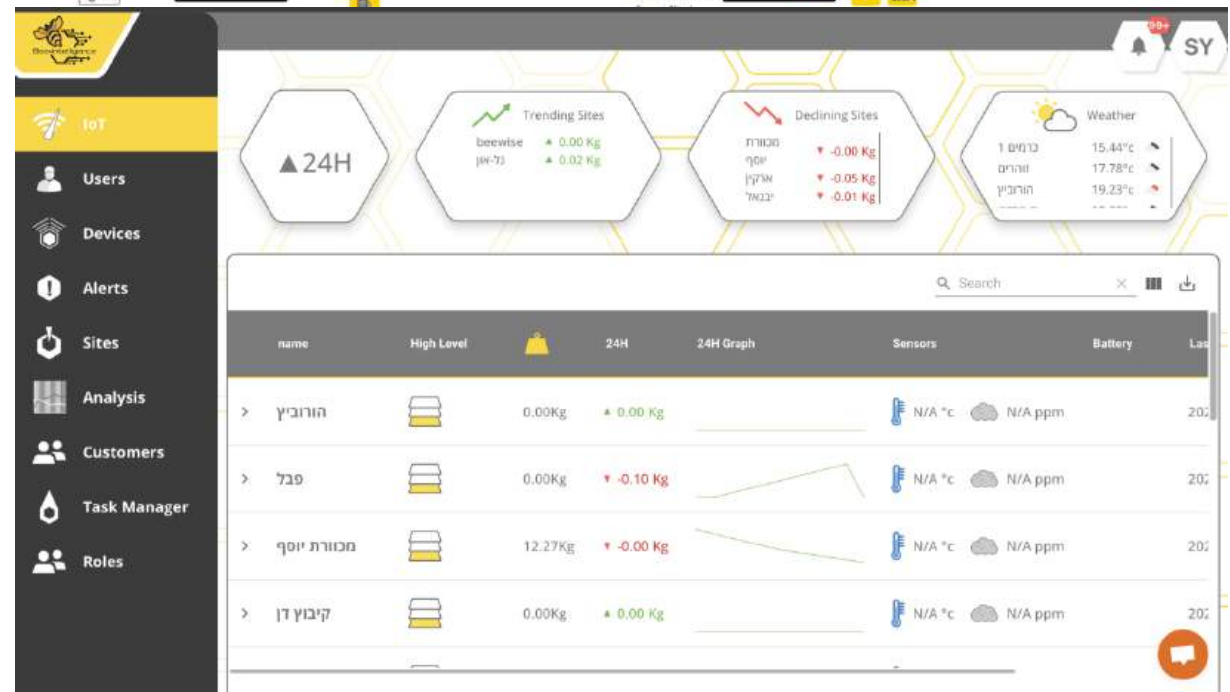
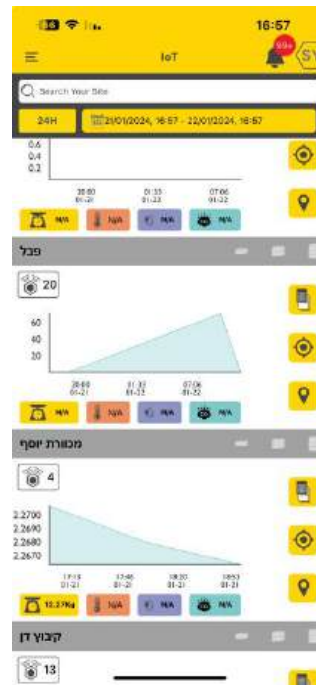


Application / computer software

The BEE INTELLIGENCE application is a smart yet simple software for hive management.

Beekeepers no longer need to rely on pencils and notebooks to track their tasks at each site.

With this dedicated application, inventory management, task management, and worker management become easier and more efficient than ever.



Advantages of the system

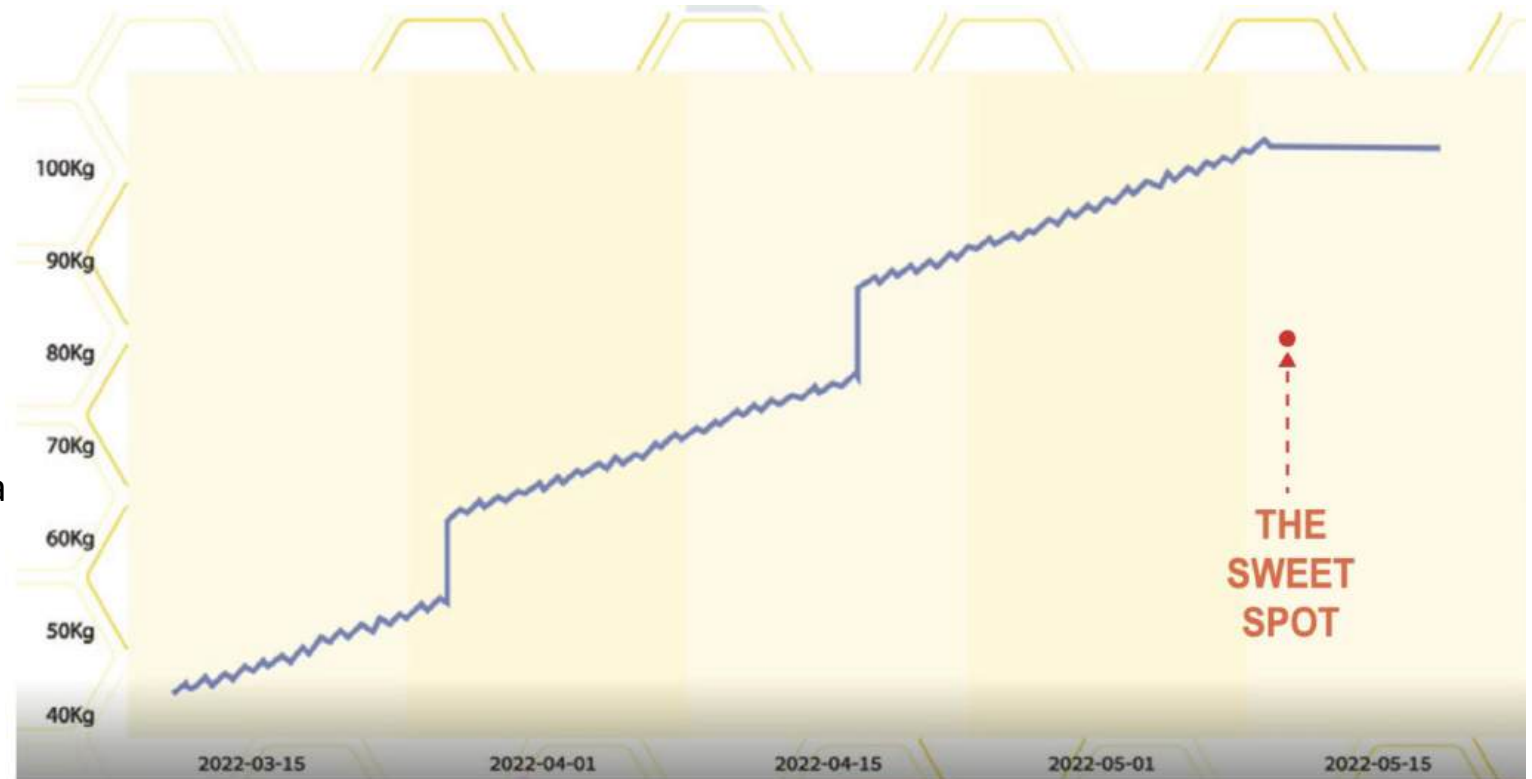
With the BEE INTELLIGENCE system, beekeepers can overcome several significant historical challenges

Setting optimal times for honey extraction

Throughout the season, the hive experiences several conditions:

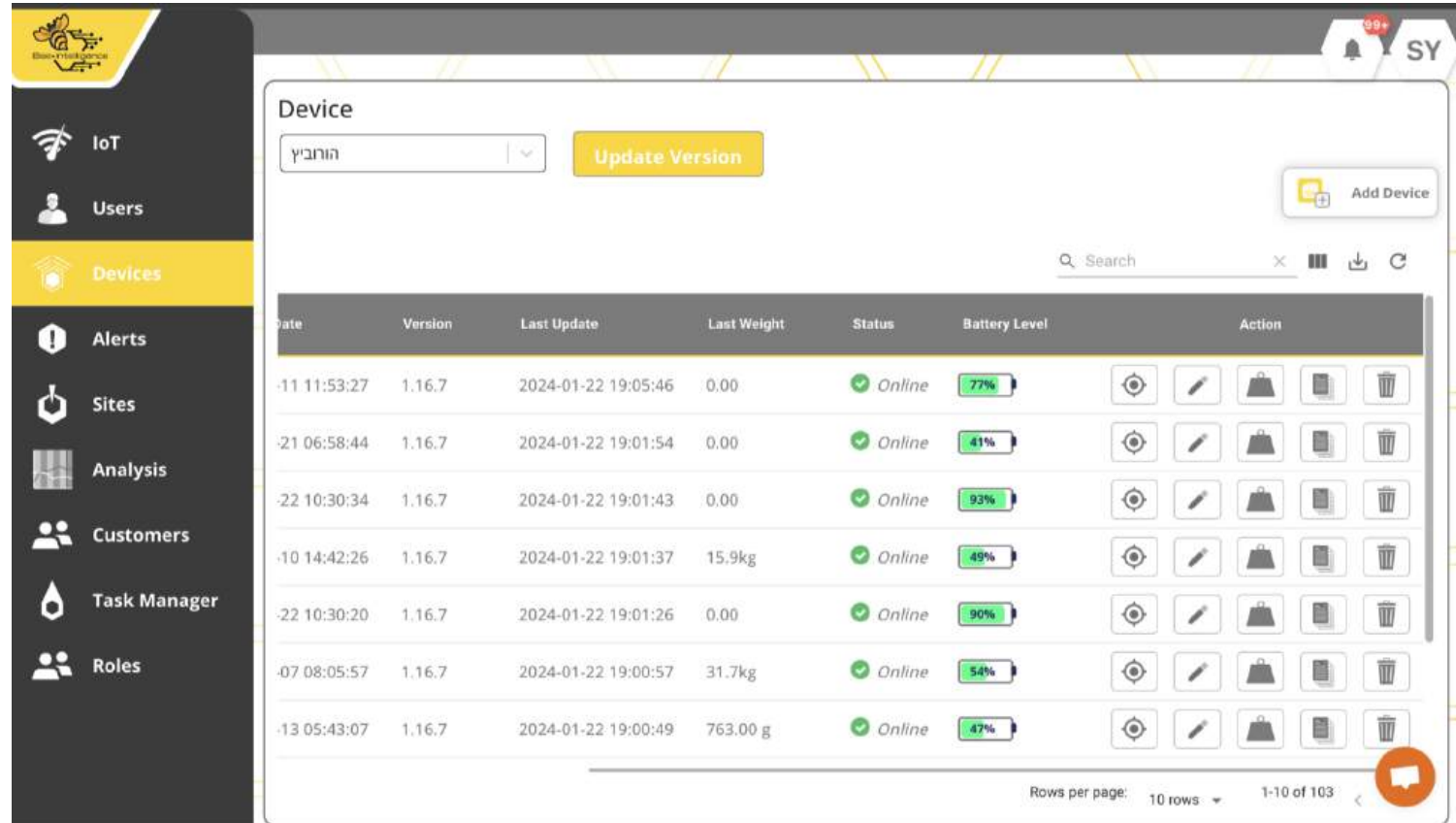
an increase in hive weight - a stop in weight gain due to a pause in honey collection - followed by a decrease in hive weight as the bees start consuming the stored honey.

Using the system, the exact signal for the optimal time for honey extraction is received, when the increase in weight stops, and the hive has reached the 'sweet spot,' which is the optimal time frame for honey extraction.



Inventory Management and Tracking

The smart application allows beekeepers to keep track of all important data, such as inventory and the quantities of honey collected from each site.

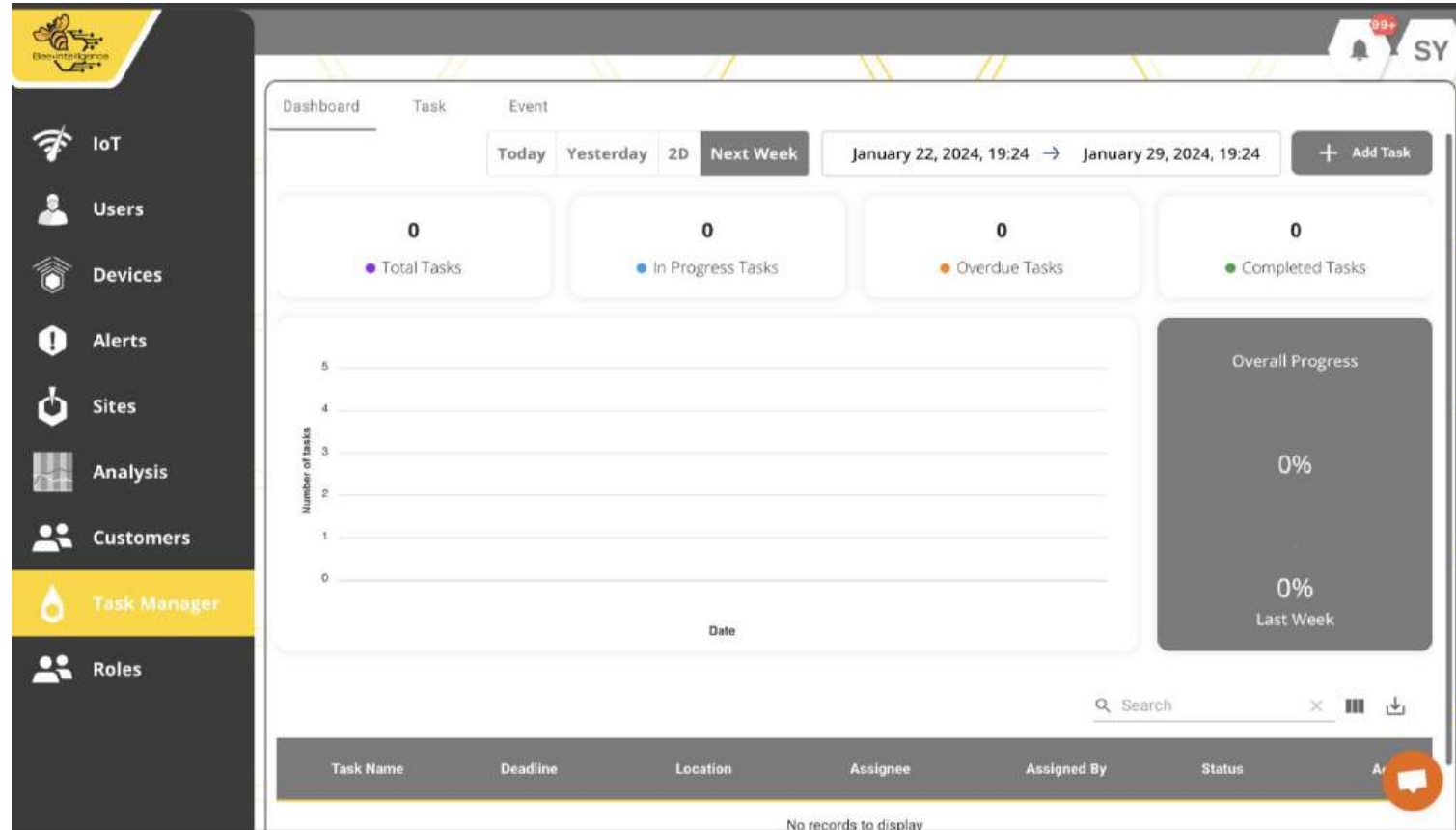


The screenshot shows a web application interface for IoT device management. On the left is a dark sidebar with navigation options: IoT, Users, Devices (highlighted), Alerts, Sites, Analysis, Customers, Task Manager, and Roles. The main content area is titled 'Device' and features a dropdown menu with the value 'הוחביץ' and an 'Update Version' button. Below this is a search bar and an 'Add Device' button. The central part of the interface is a table with the following columns: Date, Version, Last Update, Last Weight, Status, Battery Level, and Action. The table contains eight rows of data, all showing 'Online' status and various battery levels. At the bottom right, there is a pagination control showing 'Rows per page: 10 rows' and '1-10 of 103'.

Date	Version	Last Update	Last Weight	Status	Battery Level	Action
-11 11:53:27	1.16.7	2024-01-22 19:05:46	0.00	Online	77%	[Icons]
-21 06:58:44	1.16.7	2024-01-22 19:01:54	0.00	Online	41%	[Icons]
-22 10:30:34	1.16.7	2024-01-22 19:01:43	0.00	Online	93%	[Icons]
-10 14:42:26	1.16.7	2024-01-22 19:01:37	15.9kg	Online	49%	[Icons]
-22 10:30:20	1.16.7	2024-01-22 19:01:26	0.00	Online	90%	[Icons]
-07 08:05:57	1.16.7	2024-01-22 19:00:57	31.7kg	Online	54%	[Icons]
-13 05:43:07	1.16.7	2024-01-22 19:00:49	763.00 g	Online	47%	[Icons]

Worker Management

The system provides growers with a tool for managing workers, which includes task distribution, confirmation of task completion based on mobile phone location, and the uploading of photos.



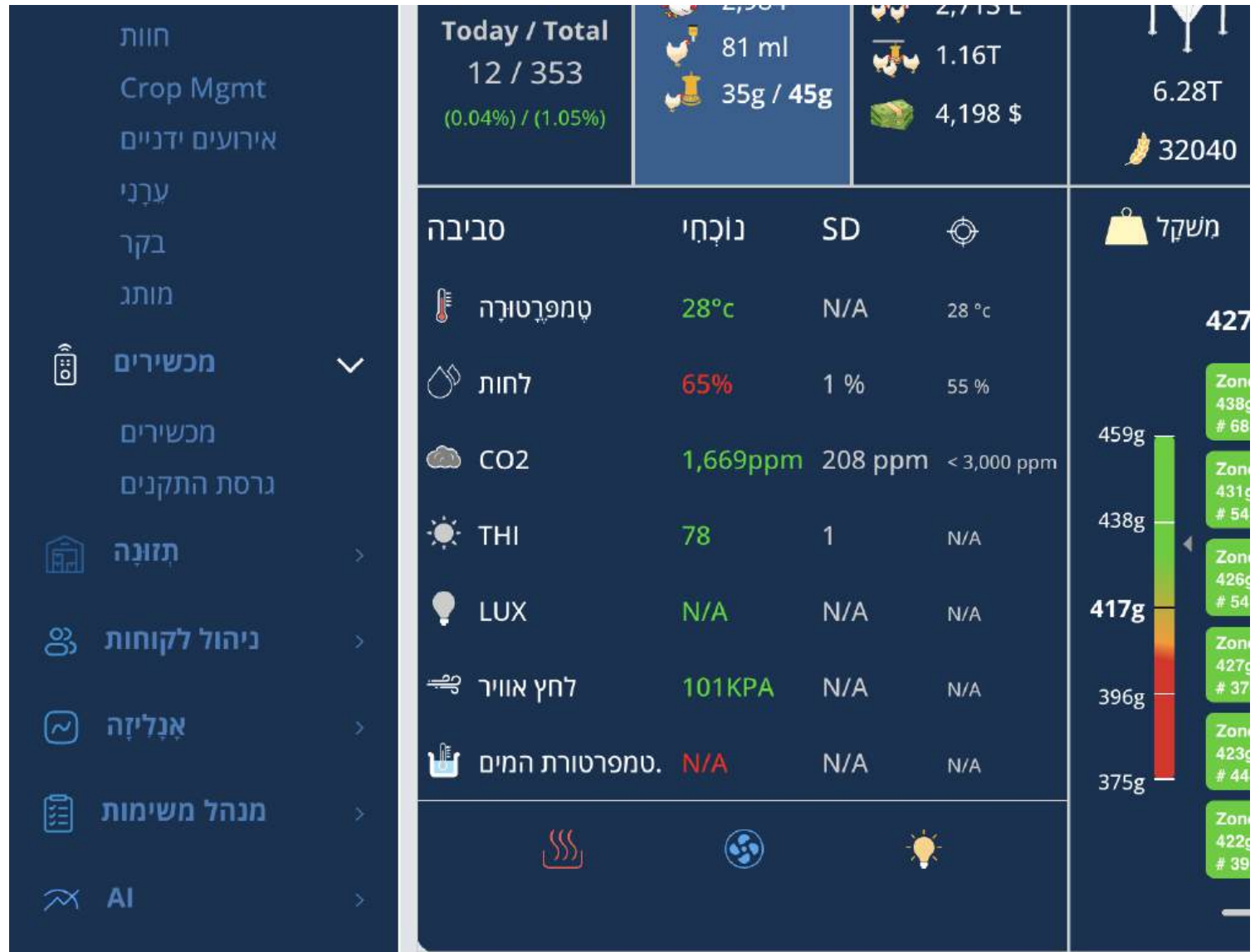
Additional and Future Functions

This is just the beginning, more developments and solutions are on the way!

Climate Sensors

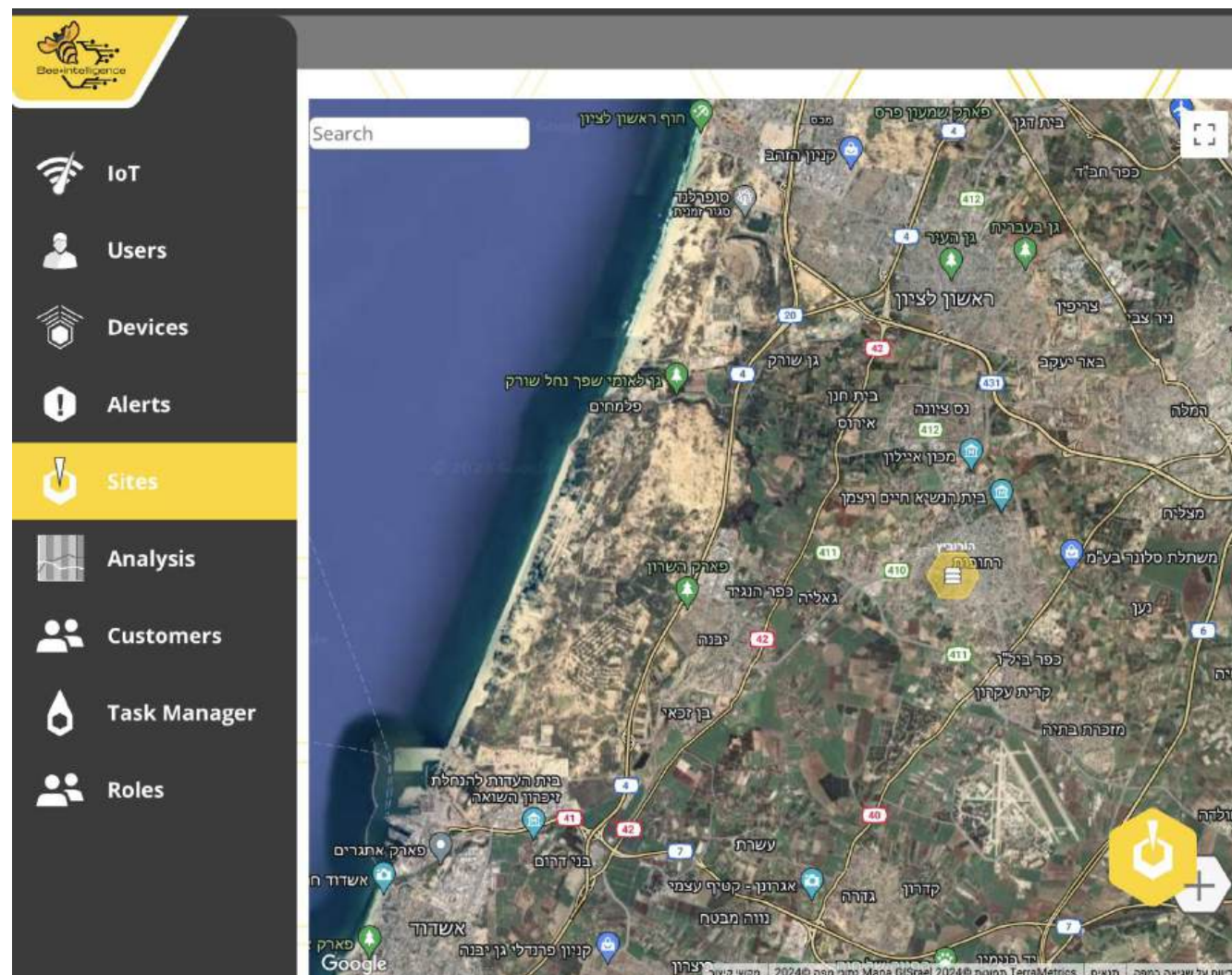
Adjacent to the hives, an advanced climate sensor is installed that can measure critical parameters in the local climate.

With dedicated software, it is possible to analyze and obtain an accurate indication of the hive's condition in real-time.



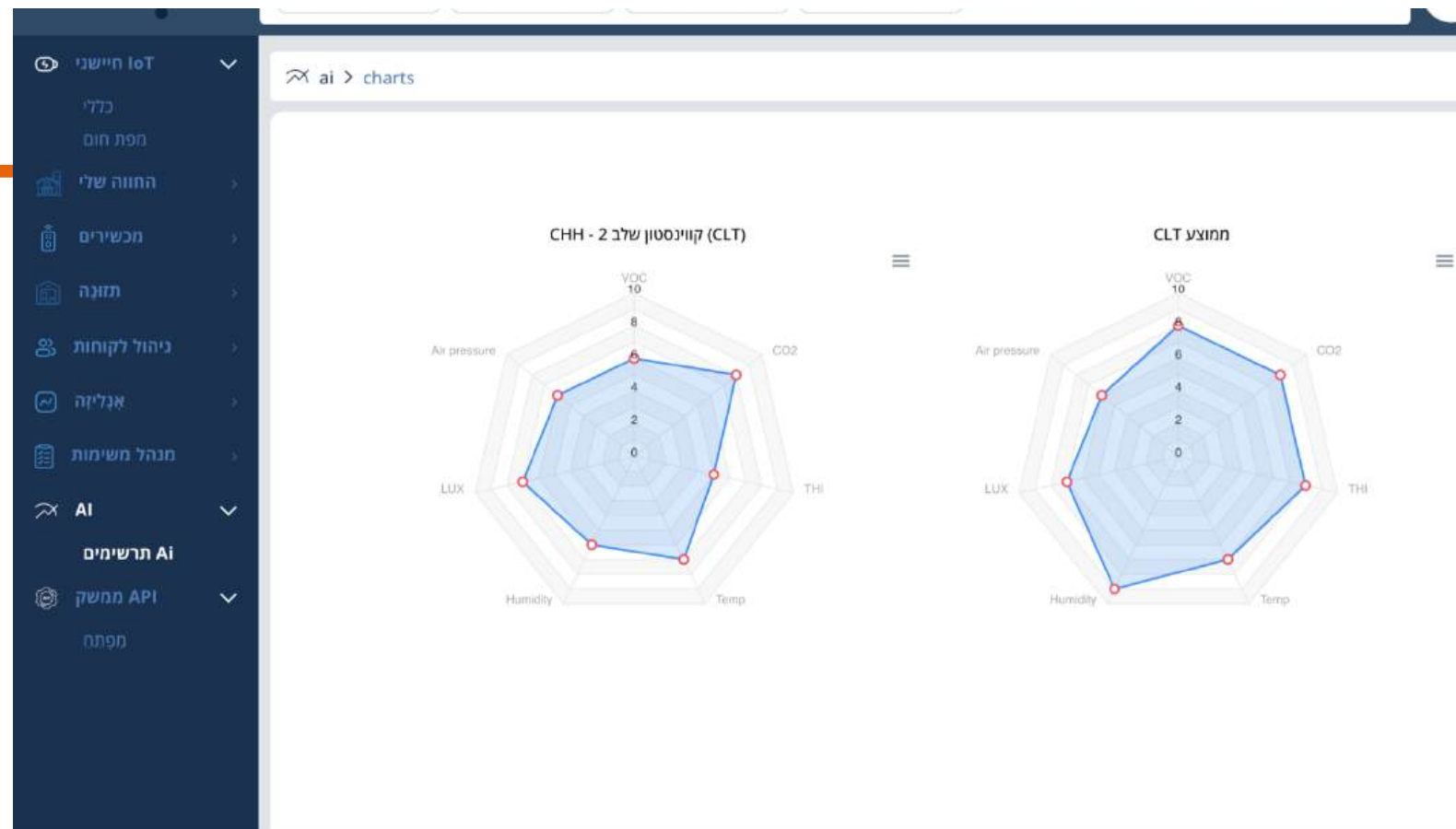
Alerts on theft and tracking the hive

A small, dedicated sensor with independent transmission capabilities, which alerts in real time about thefts and continues to transmit data on the hive's location even after it has been stolen.



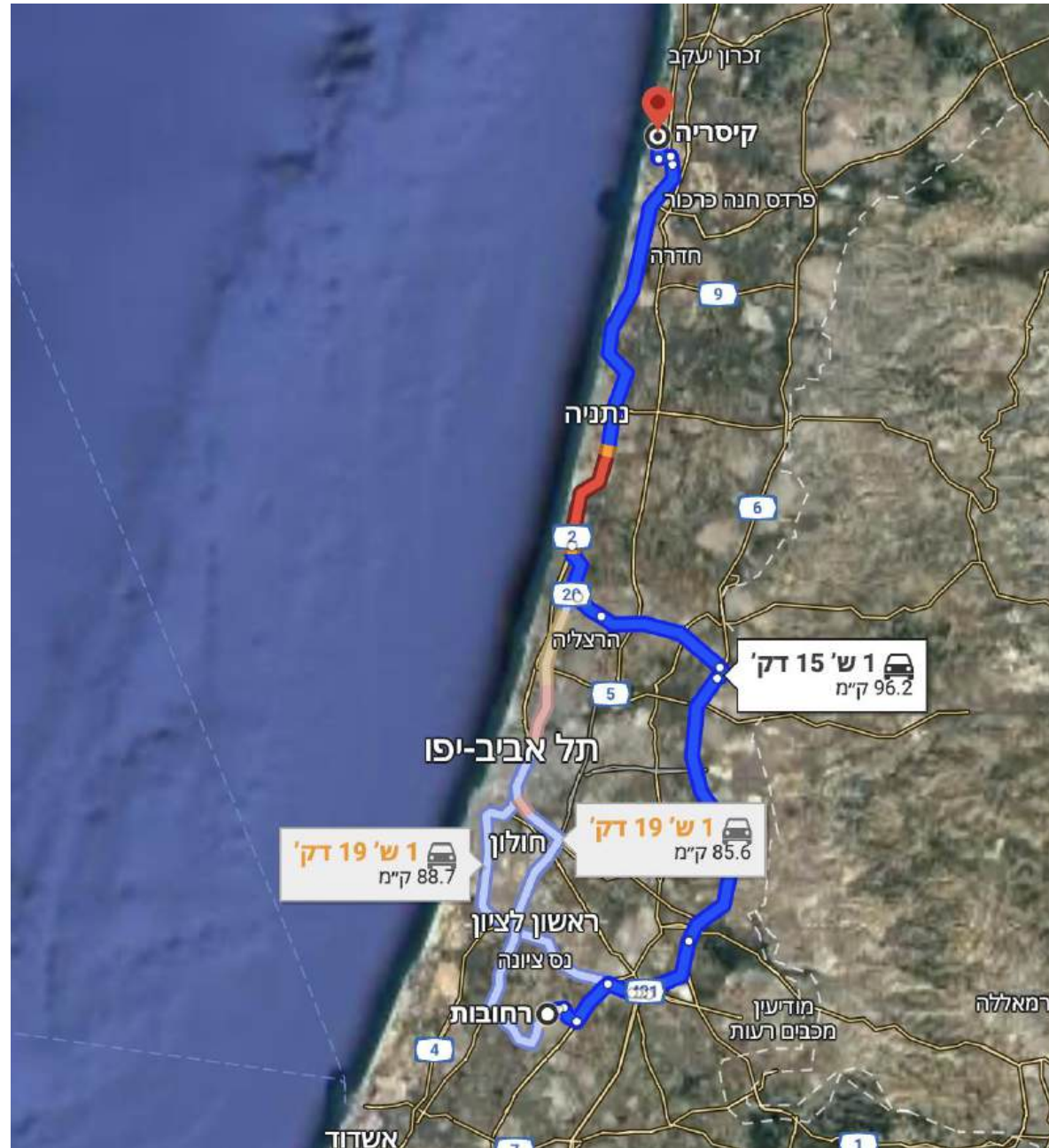
AI Analysis

The system is AI-based and, in the future – after additional learning time by incorporating weather conditions, past seasons, and the history of the hive – it will be able to provide optimization recommendations, tips for improving output, and precise instructions for actions that can increase the productivity and efficiency of the hive.

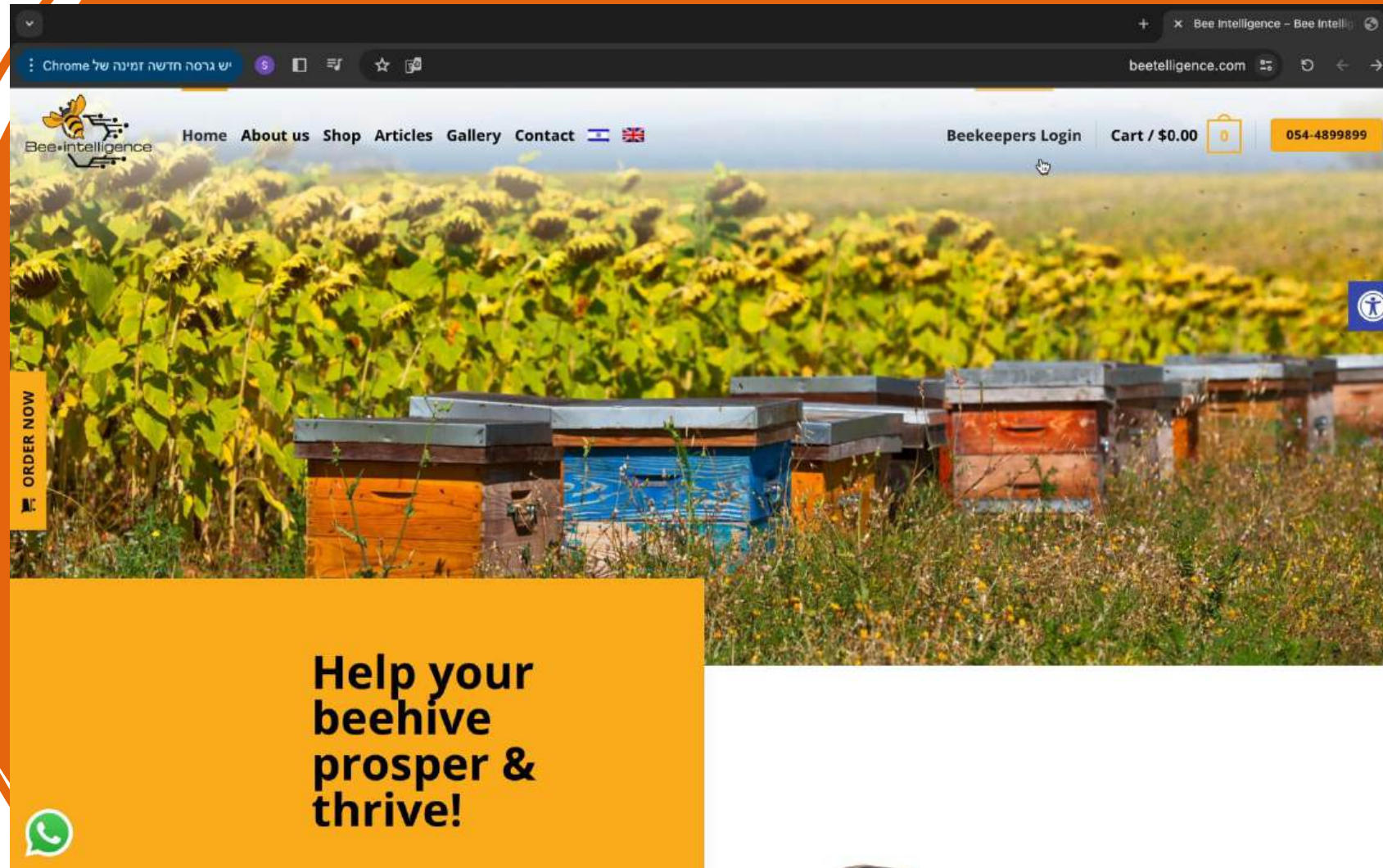


Management of Trucks/Employee Vehicles

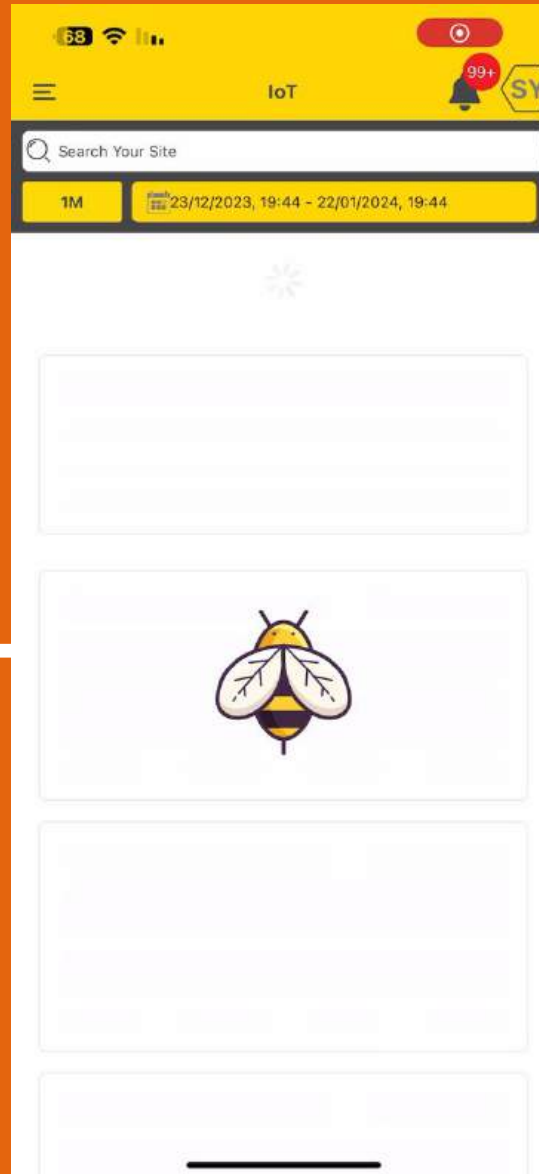
The system allows for the management and tracking of truck and vehicle movements, including locations, work distribution, and recommended routes for travel.



Screen recording of site usage



Screen recording of application usage





Thank you!



Shalev Yeter



shalevy@zeusint.com



058-52-44444



beetelligence.com